

ZenConnect

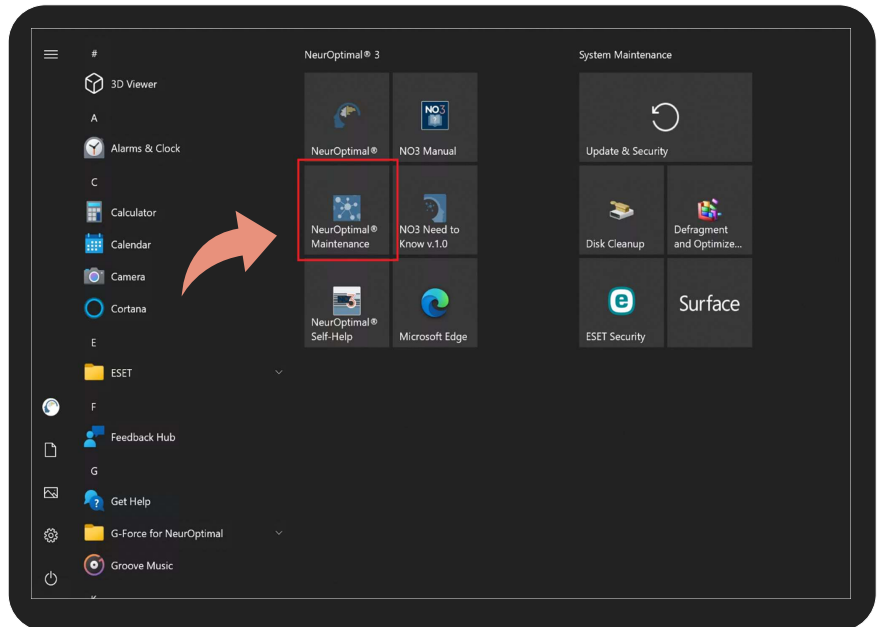
Reconfiguration Guide

This Post Windows Feature Update Reconfiguration Guide will show you how to reinstall components, configure G-Force and Sound Settings, as well as USB power settings.

Reinstalling Components

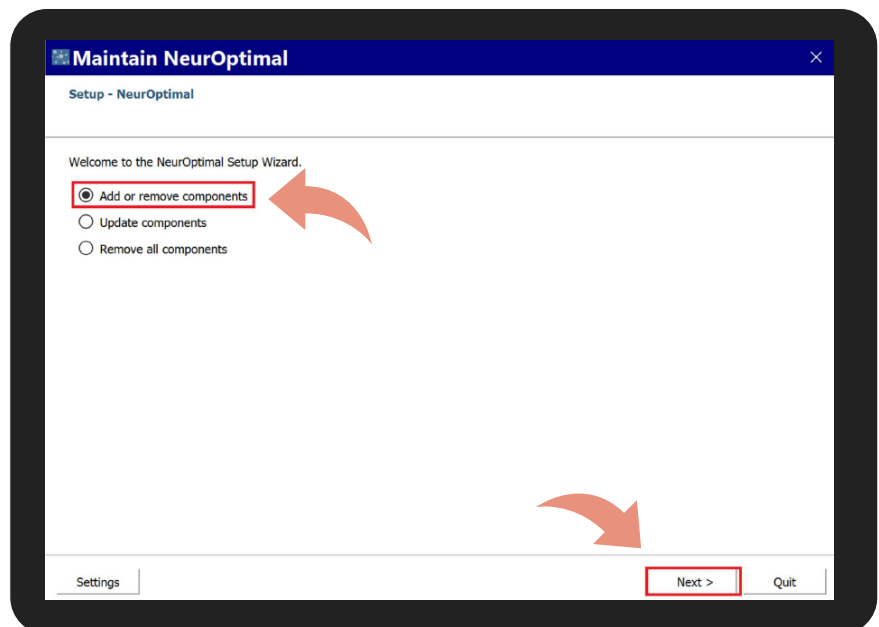
1

Select **NeuroOptimal® Maintenance** from the start panel.



2

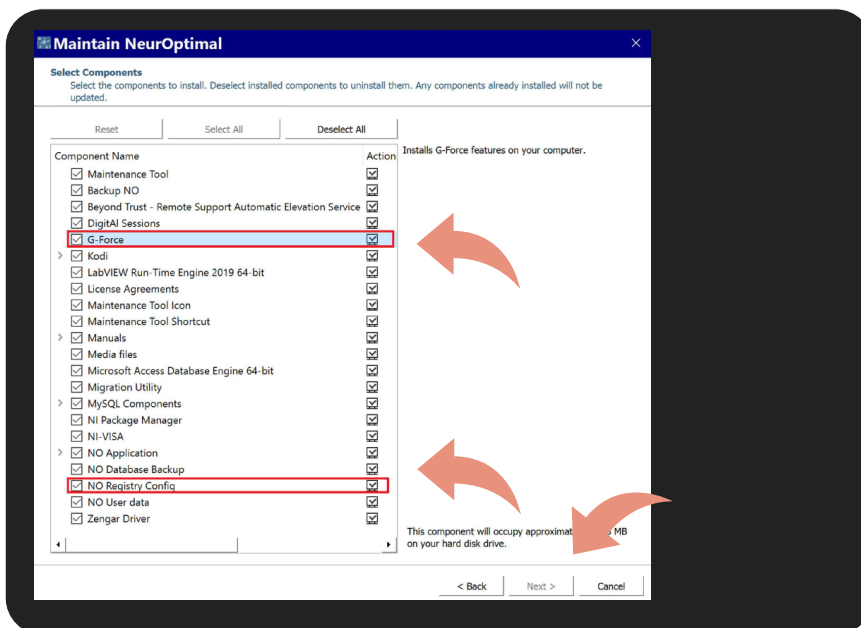
Select **Add or remove components**. Click **Next**.



Reinstalling Components

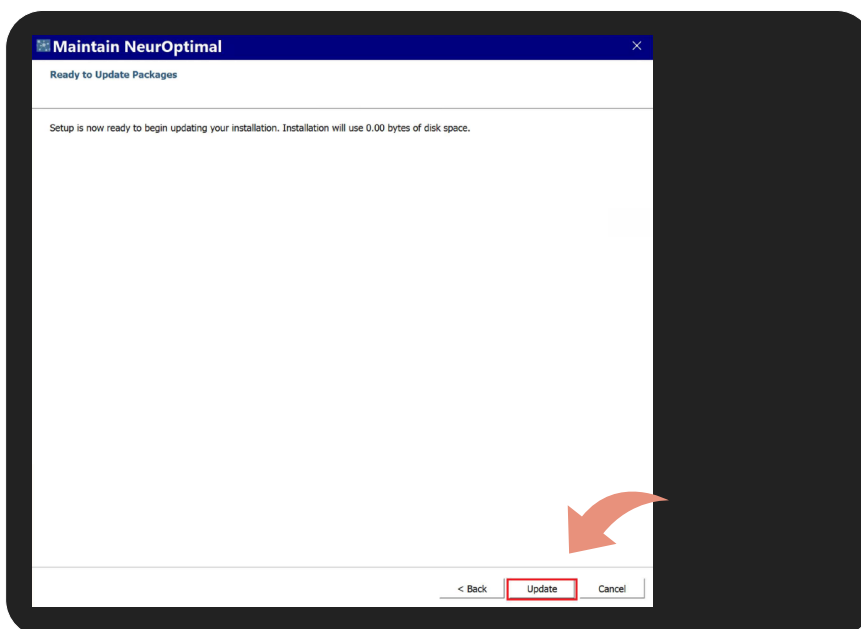
3

Un-check **G-Force**
and **Registry**
components.
Click **Next**.



4

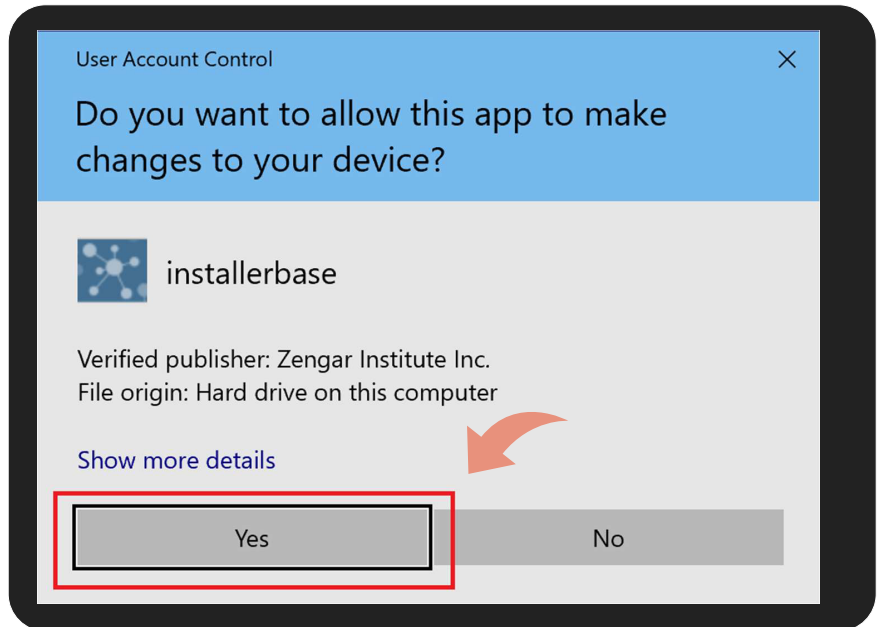
Click **Update**.



Reinstalling Components

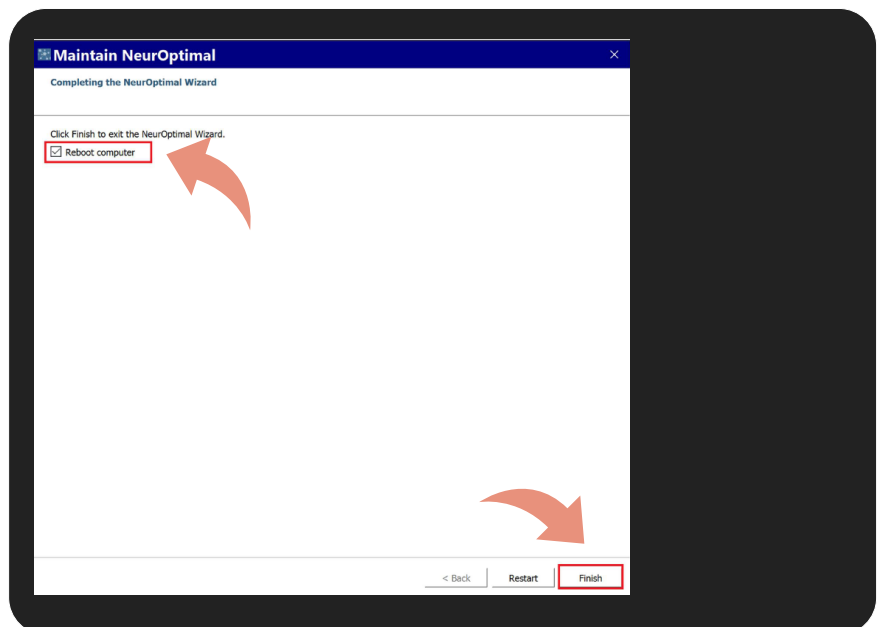
5

Click **Yes** to the user account control prompt.



6

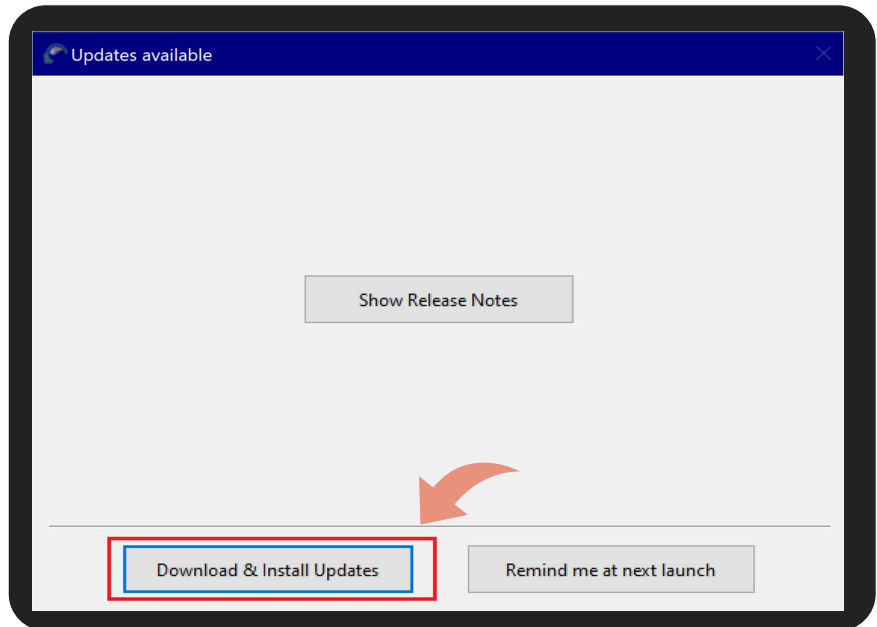
When complete, click **Reboot computer** and **Finish**.



Reinstalling Components

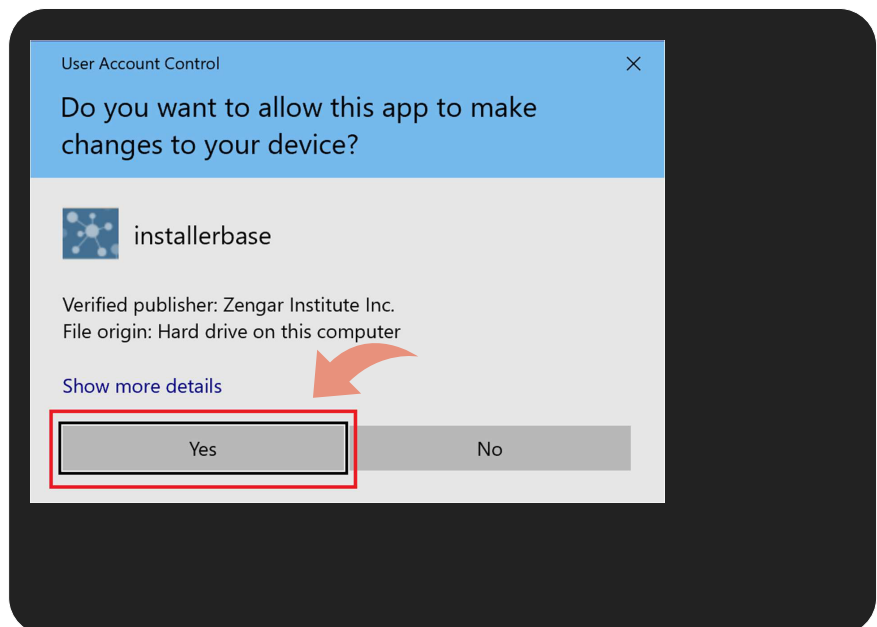
7

After rebooting, launch NeurOptimal®. You will be prompted to install updates. Click **Download & Install updates.**



8

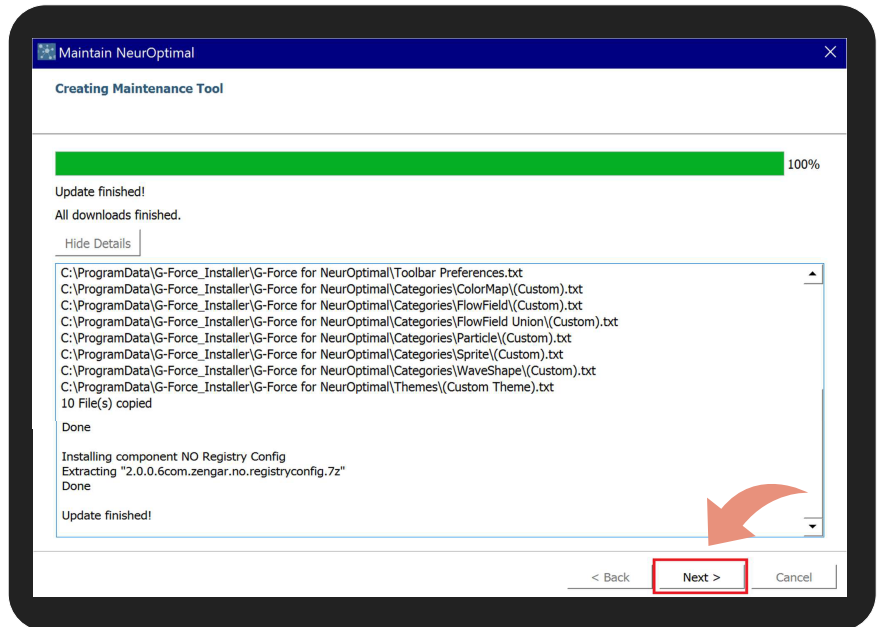
When prompted, click **Yes** to the installer.



Reinstalling Components

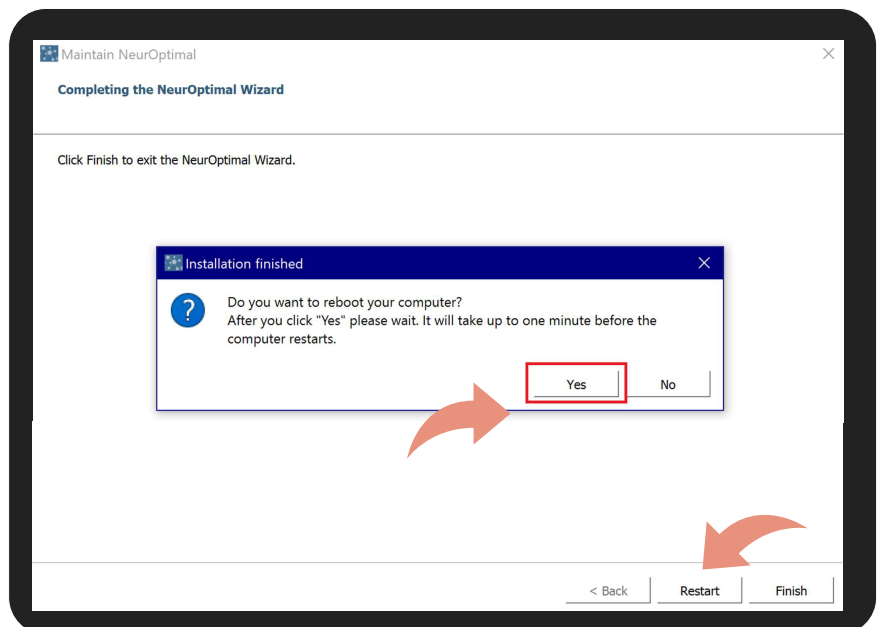
9

After installation completes, click **Next**.



1100

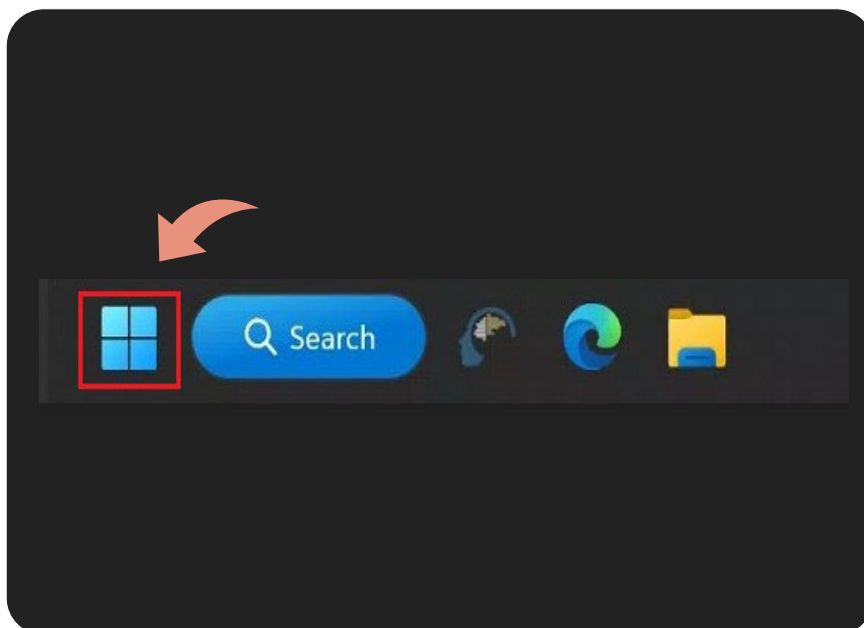
You will need to reboot your computer. Click **Yes** and **Restart**.



G-Force Configuration and Sound Settings

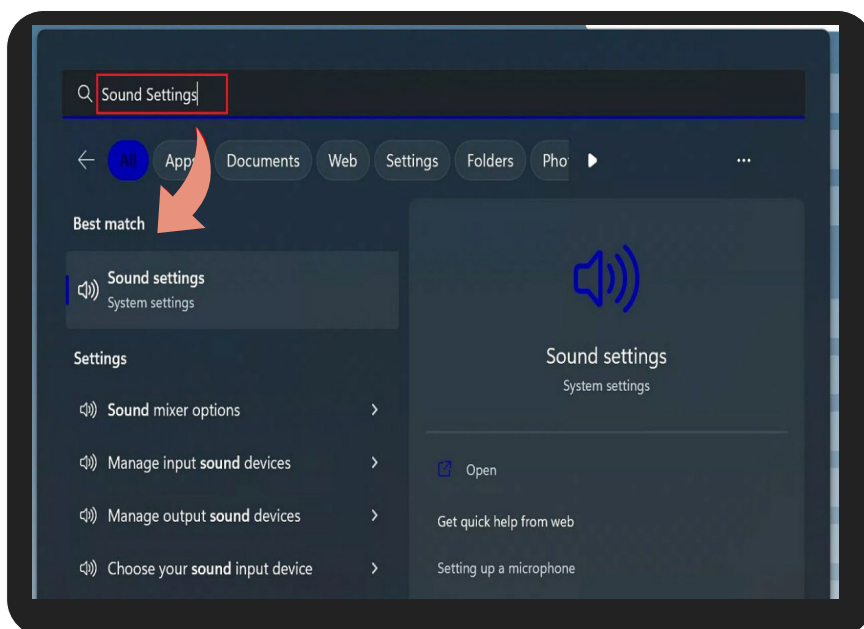
1

Click the Windows icon.



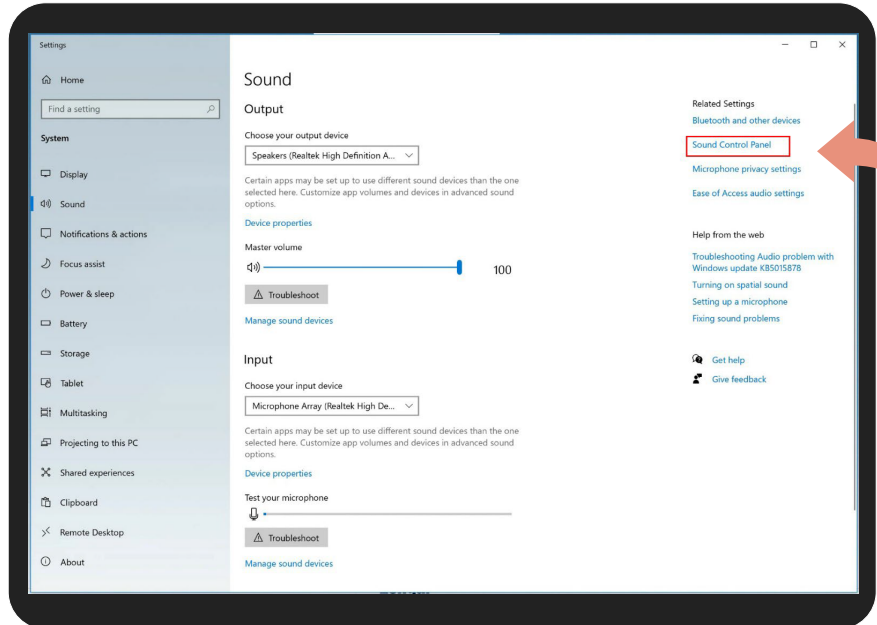
2

Type **Sound Settings** in the search bar and press **Enter** on your keyboard or click **Sound Settings** under **Best match**.

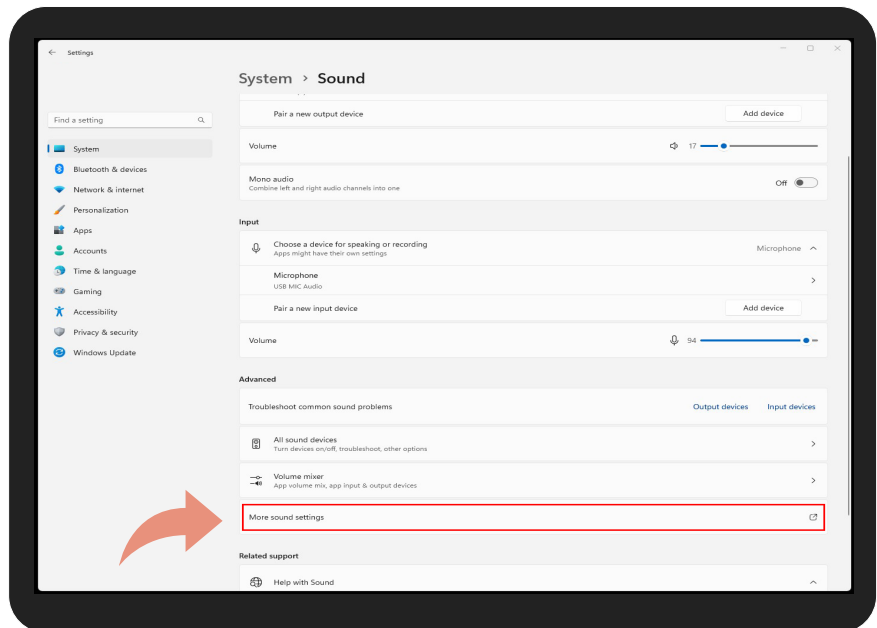


G-Force Configuration and Sound Settings

3a. *Windows 10.*
When the **Sound** window opens, click **Sound Control Panel** and then proceed to step 4.



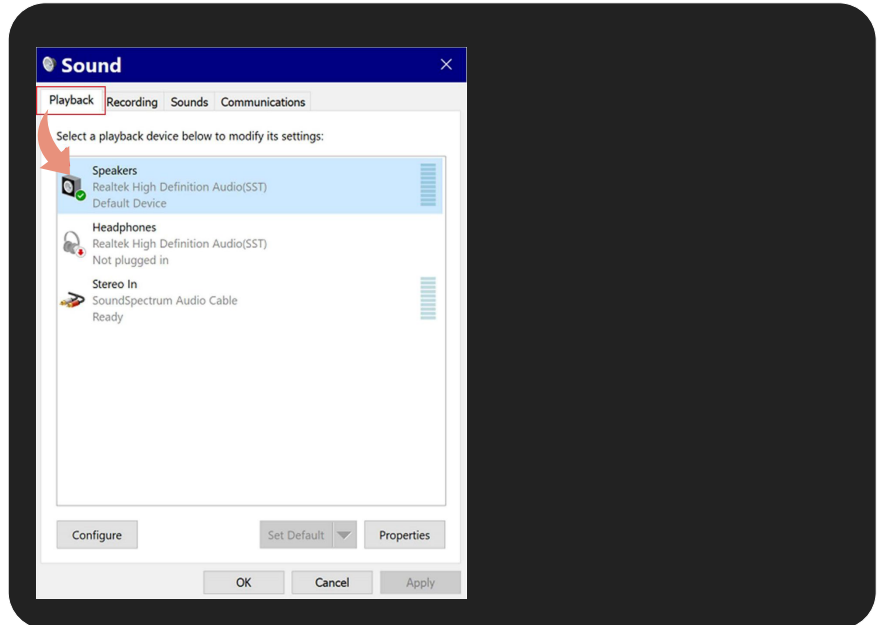
3b. *Windows 11.*
When the **Sound** window opens, scroll down the page and click **More sound settings** and proceed to step 4.



G-Force Configuration and Sound Settings

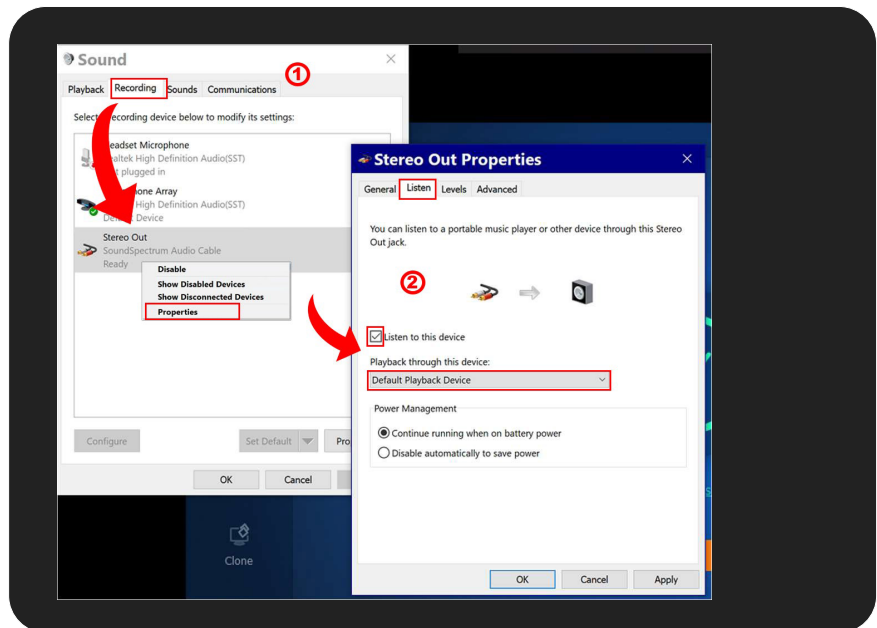
4

Select the **Playback** tab and verify **Speakers** are set as **Default Device**.



5

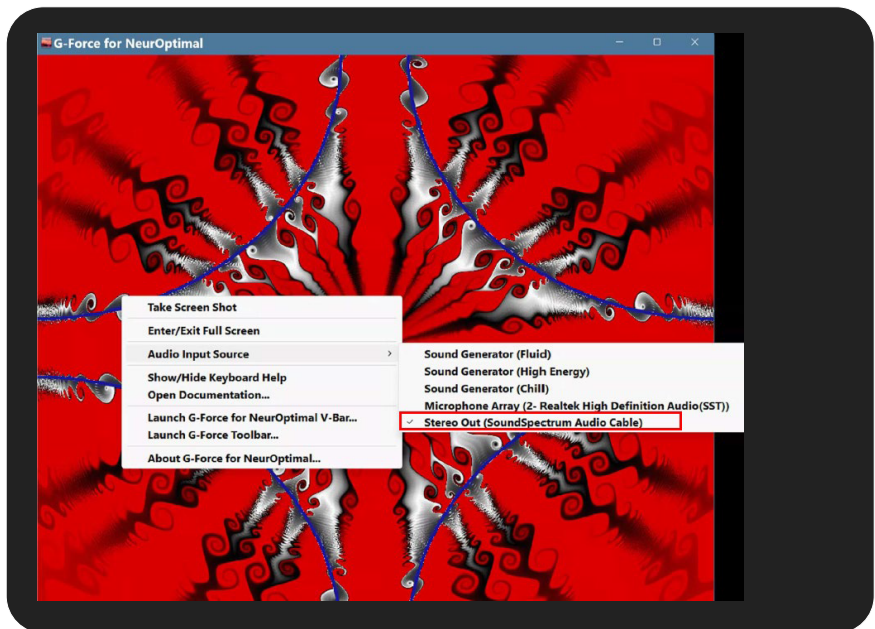
- In the same **Sound** window, select the **Recording** tab.
- Right-click **Stereo Out** and select **Properties**.
- In the next window, select the **Listen** tab.
- Check **Listen to this device**.
- Use the drop-down menu and set it to **Default Playback Device**.
- Press **OK** on both windows.



G-Force Configuration and Sound Settings

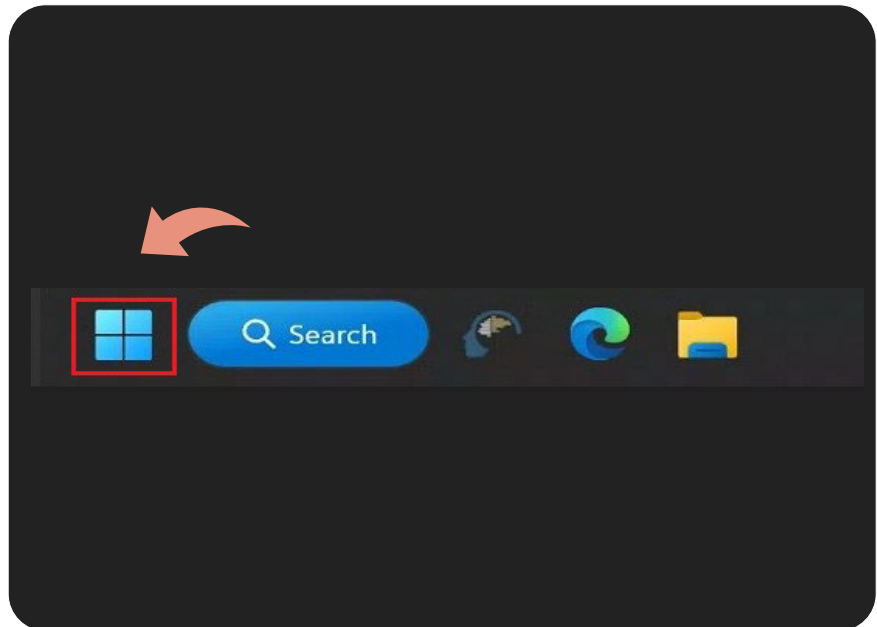
6

Right click the G-Force screen and select
Stereo Out
(SoundSpectrum Audio Cable)

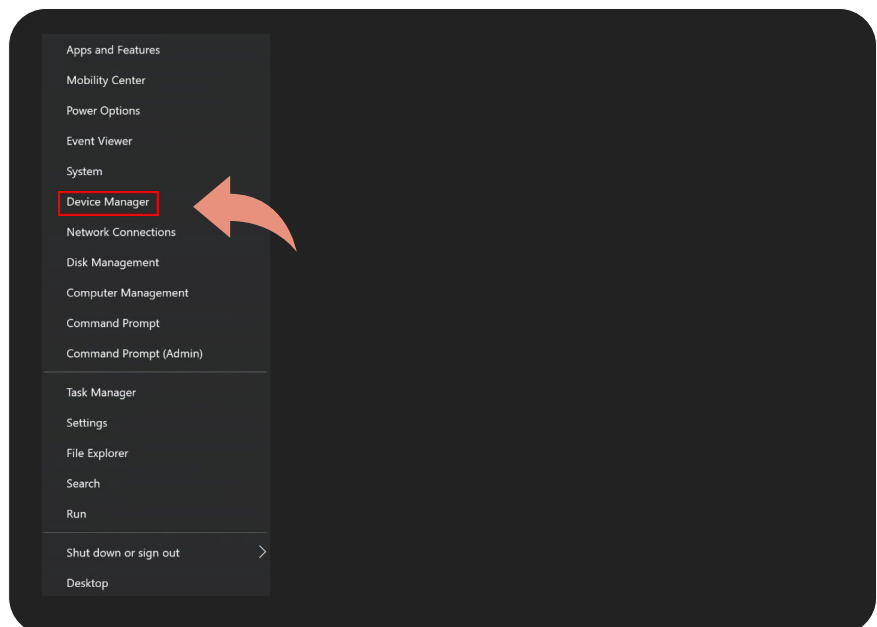


USB Power Settings

- 1 Right click on the Start button in the bottom left corner of your screen.



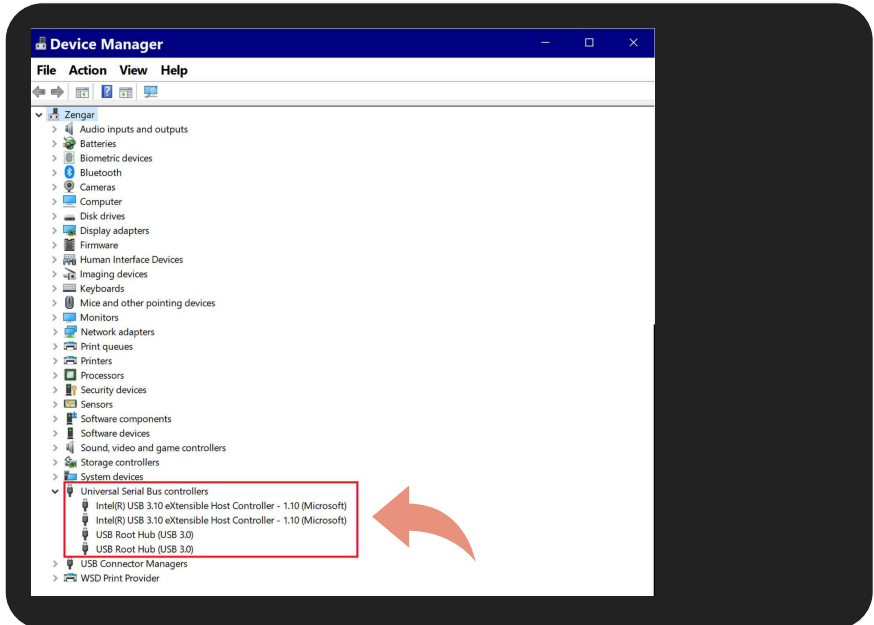
- 2 Select **Device Manager** in the menu that appears



USB Power Settings

3

Open up the **Universal Serial Bus controllers** sub-menu. *Surface 2 Book users will also have the Generic SuperSpeed USB hub (not pictured).*



4

Uncheck **Allow the computer to turn this device to save power on all the following components.**

If you do not have a Surface Book 2, you can ignore the Generic SuperSpeed USB Hub.

