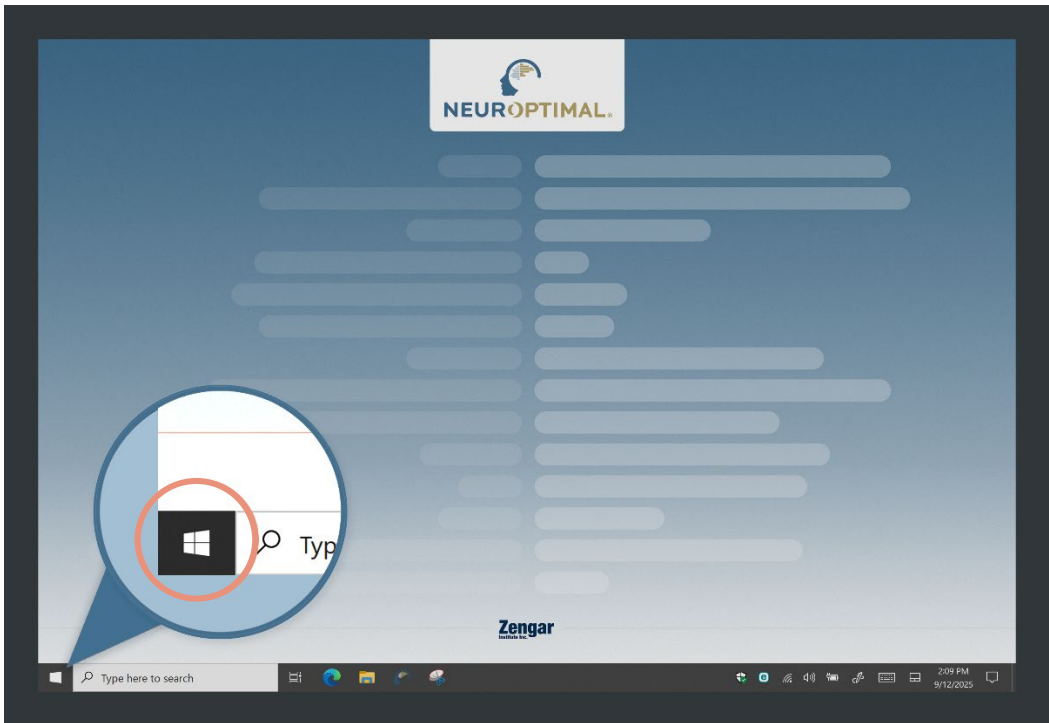


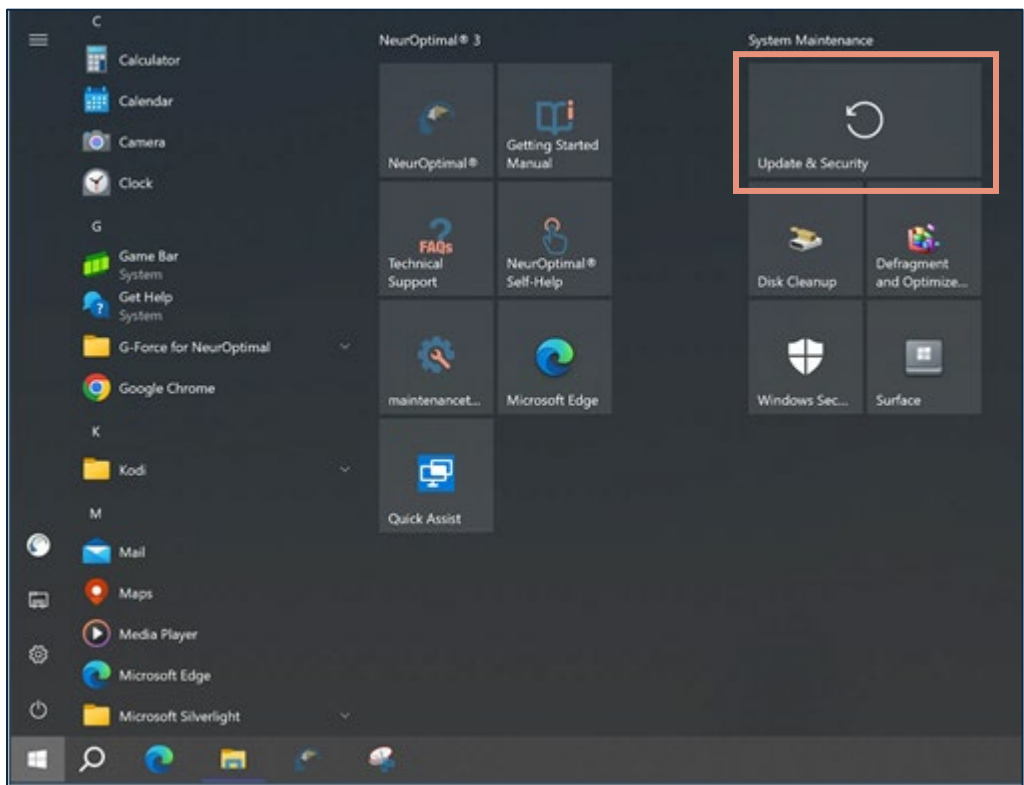
Step-by-step instructions to enroll your Windows 10 system in Extended Security Updates (ESU).

## Checking and installing the latest Windows 10 Updates

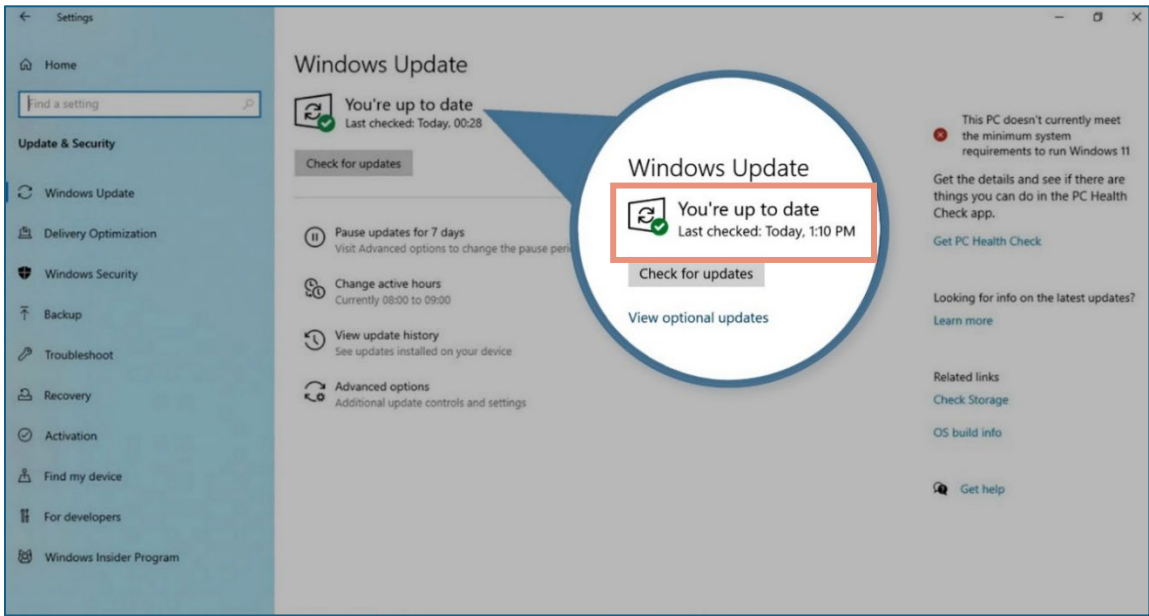
1. Click the Windows button to open the **Start Panel**.



2. Click **Update & Security**.

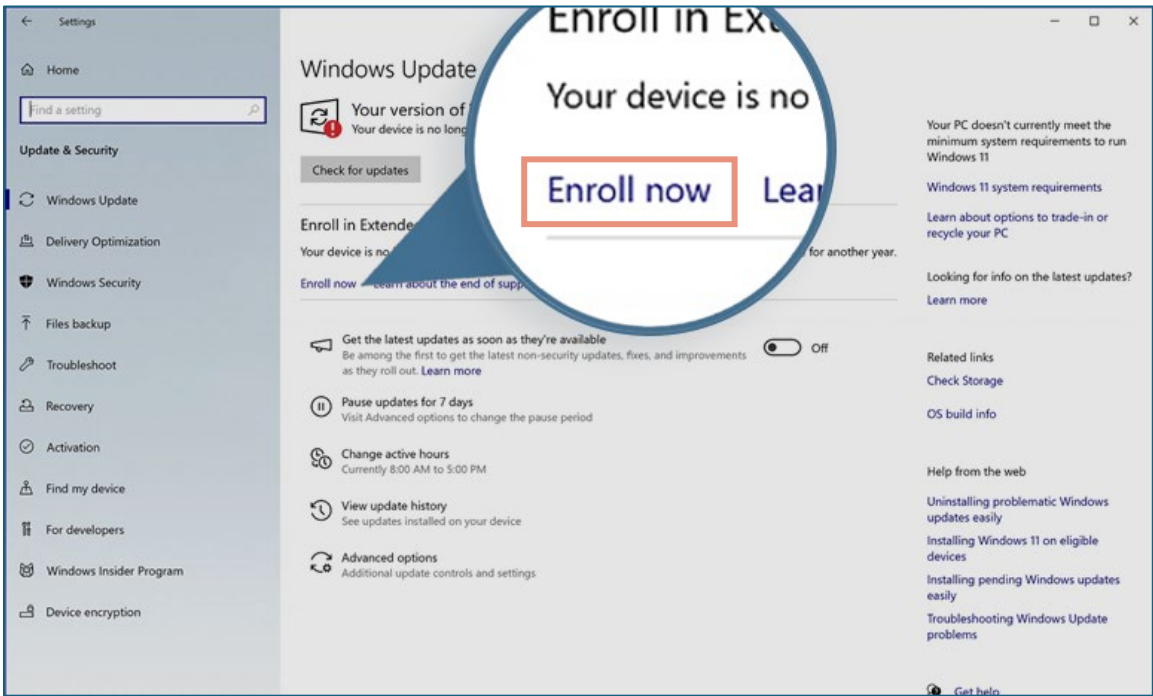


3. Check for and install any available Windows Updates until no further updates are available and it says **You're up to date**.
- Restart your system when prompted after the updates install.
  - This may require you to restart your system several times.



## Enroll in the Extended Security Updates (ESU) program

4. Open **Update & Security** again (you can follow the same steps as in Steps 1 and 2).
5. In the **Windows Update** section, Click **Enroll now**.



6. In the pop-up window that appears, click **Next** to continue.



---

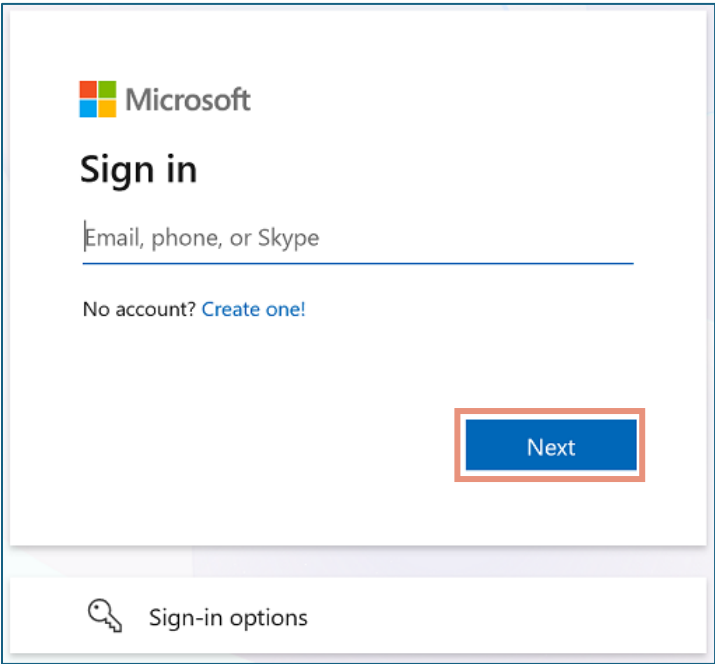
## Create or sign in to a Microsoft account

7. When prompted to sign in, use your existing Microsoft account or click on **Create one!** if you do not have one.


---

## Sign in and complete enrollment

8. Enter the email address associated with your Microsoft account, then click **Next**.



9. If you see a message that says **Let's protect your account**, Microsoft needs you to add some information to your account to verify that it's really you trying to sign in.
- Enter an alternate email address or phone number.
  - Select **Next**.
  - Retrieve the code from your alternate email or phone number and enter it in the prompt provided.
  - Select **Verify**.



██████████@outlook.com

Let's protect your account

Add another way to verify it's you, so only you can get into your Microsoft account.

What security info would you like to add?

An alternate email address

▼


someone@example.com

We'll send a security code to your alternate email address in the next step.

[Skip for now \(7 days until this is required\)](#)

Next

10. Enter the password and click **Sign in**.



← ██████████@outlook.com

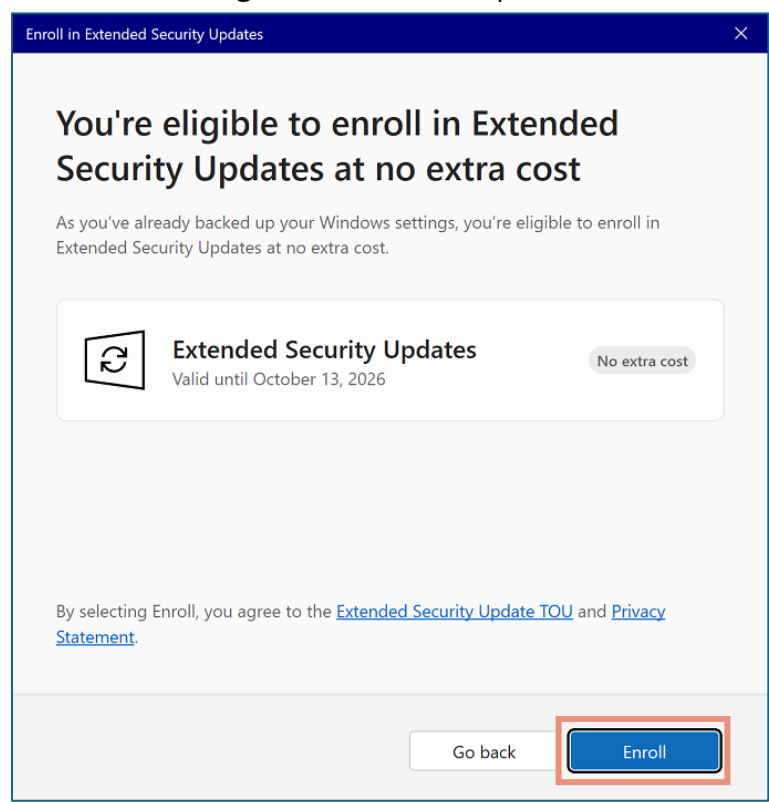
Enter password

Password

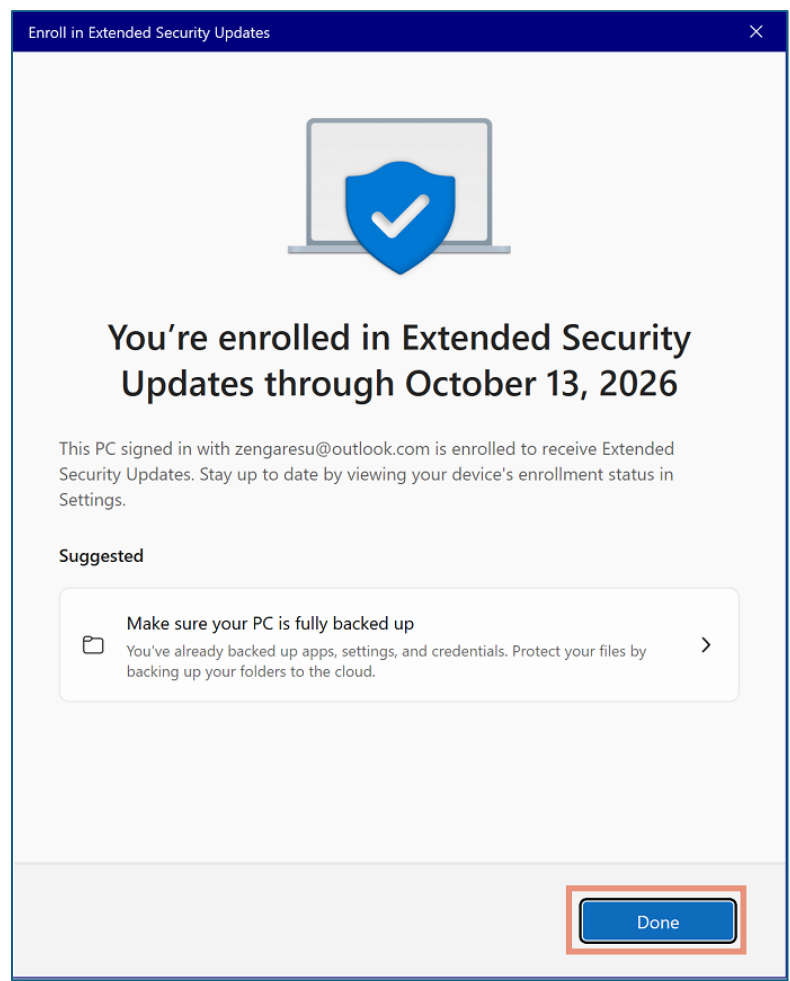
[Forgot password?](#)

Sign in

11. You can now enroll your system in Extended Security Updates (ESU).
12. Click **Enroll** to begin the enrollment process.



13. Your system is now enrolled in Extended Security Updates (ESU) until October 13, 2026. Click **Done** to complete the process.

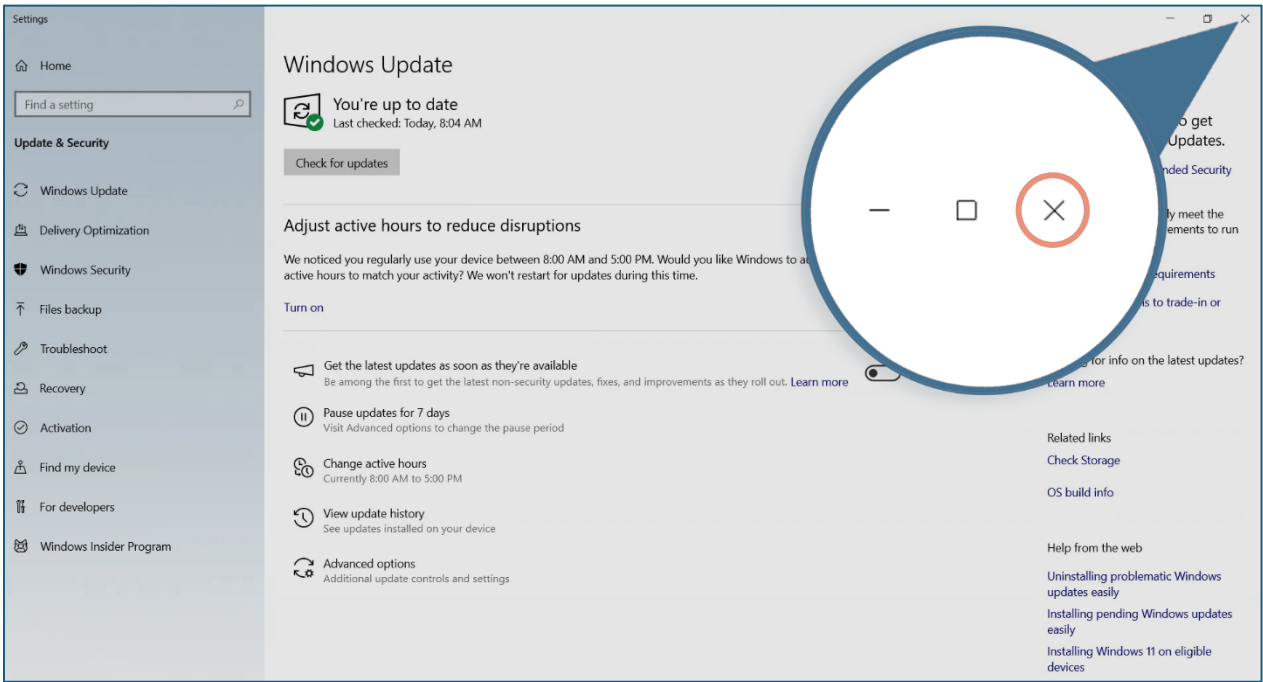


# Switch to a Local Account

**Important:** After enrolling your system in the Extended Security Updates (ESU) program, you should switch to a local account.

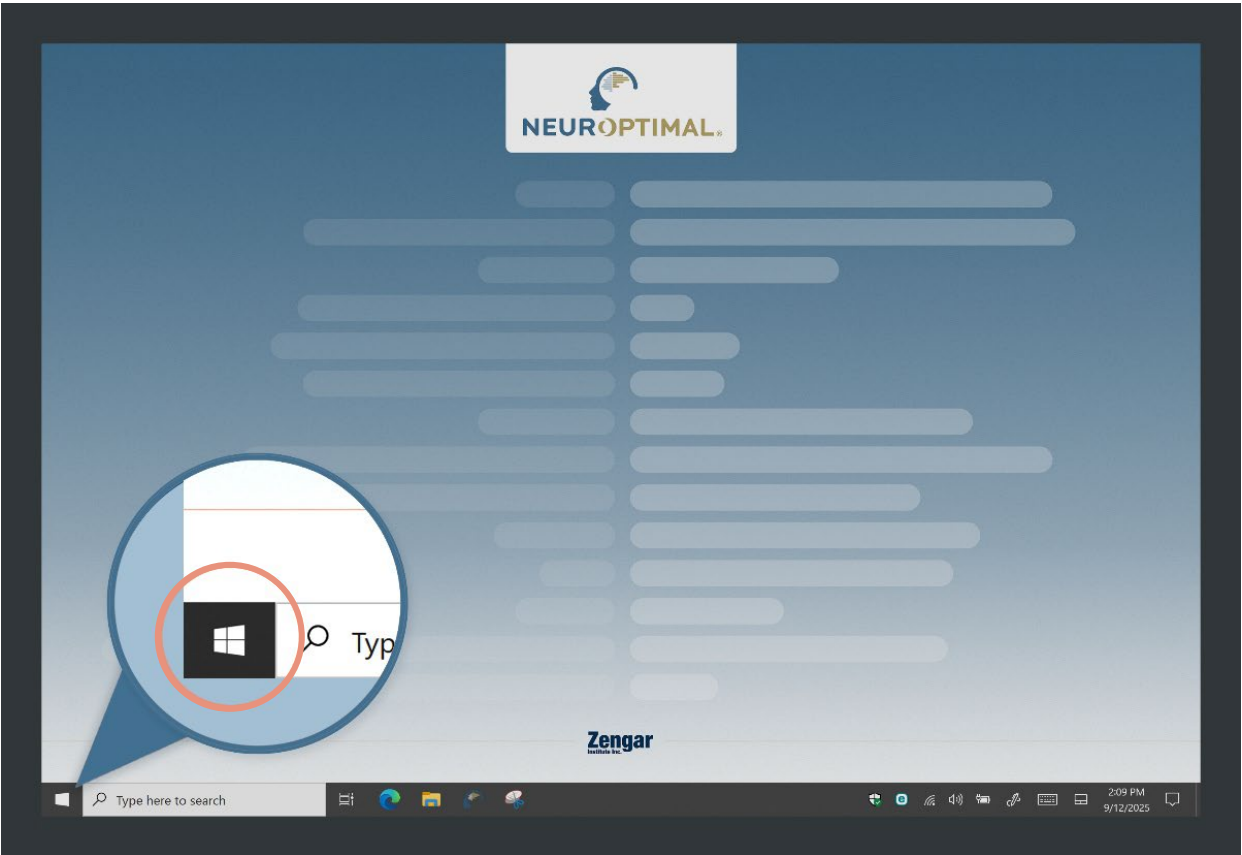
- Remaining signed in with a Microsoft account can lead to the following issues:
- Unwanted settings transfer:** Personal or work settings from one computer may automatically carry over to another device without your intent.
  - Cross-device confusion:** If you use more than one system, changes made on one may unexpectedly alter how another functions (e.g., desktop background, power settings, or default apps).
  - Loss of customization:** Carefully configured system settings for NeurOptimal® may be overridden.
  - Reduced privacy:** Data such as browsing history, passwords, and preferences may be stored in Microsoft’s cloud and shared across synced devices.
  - Account dependency:** Issues like password resets, lockouts, or account suspensions could disrupt access across all connected devices.
  - Data exposure risk:** Personal information, emails, or other sensitive data may unintentionally be shared across rental systems if the same Microsoft account is used.

14. If the **Windows Update** window is still open, close it.





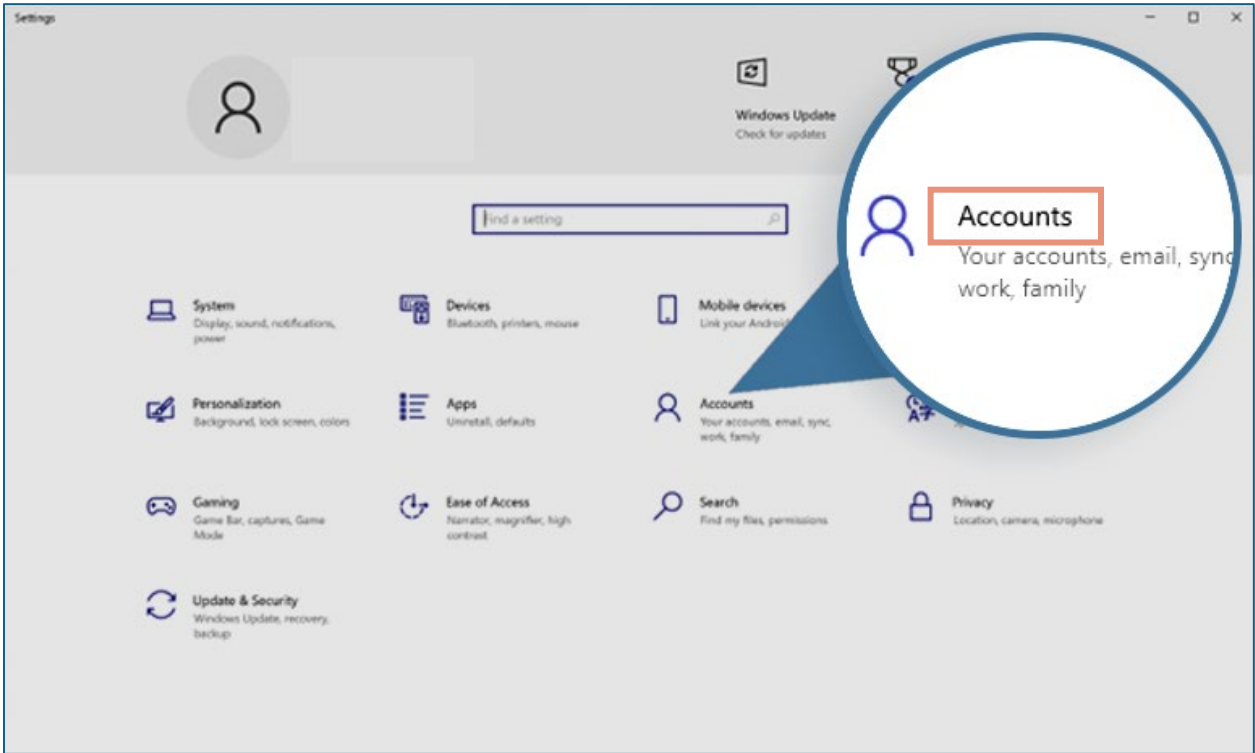
15. Click the Windows button in the bottom left of the screen to open the **Start Panel**.



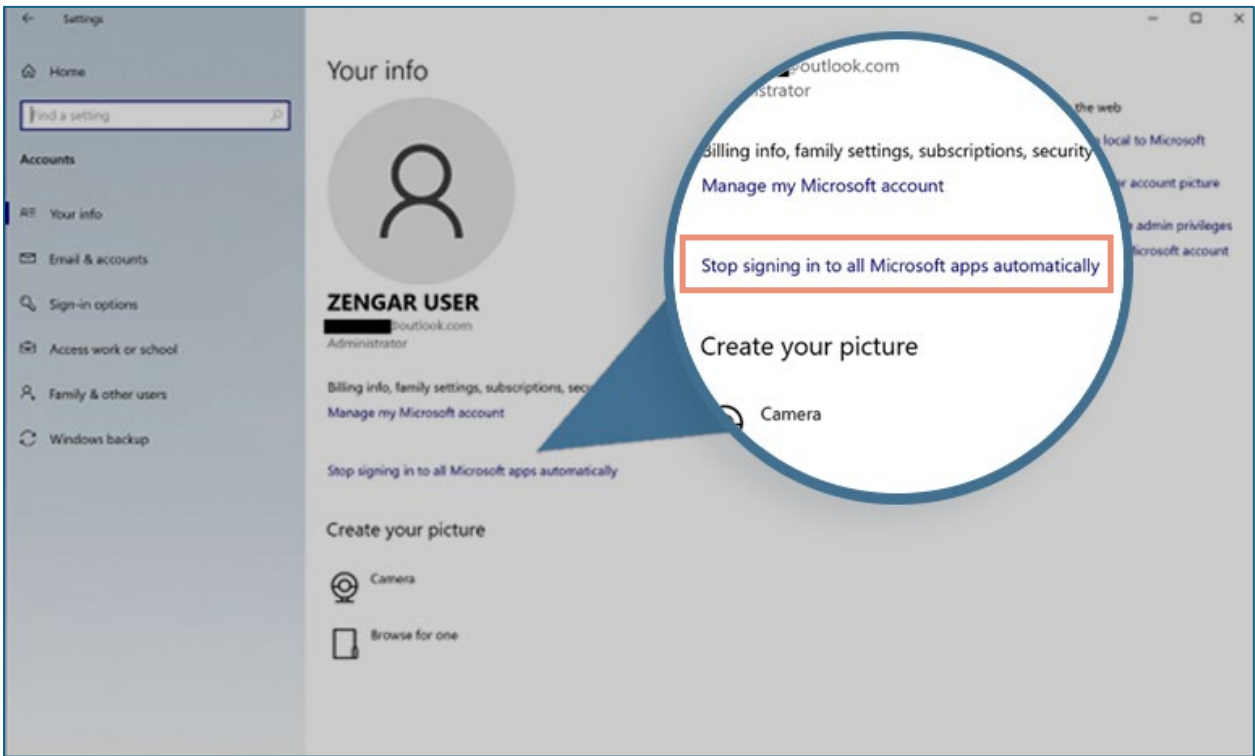
16. Click the gear icon in the bottom left to open **Settings**.



17. In the Home page of Settings, click **Accounts**.



18. In the Your info page, click **Stop signing in to all Microsoft apps automatically**.





19. You are now using a local account.

**Congratulations!**

You’ve successfully enrolled your device in the Extended Security Updates (ESU) program, and your system is now using a local account. Windows 10 will continue to receive critical security updates after end of support until October 13, 2026.

